

WinCounter Integration with Retail Manager

WinCounter can produce a sales conversion report by using POS data directly from the Retail Manager data file.

Configuration

To configure the integration with retail manager, select Tools-Options from the WinCounter Reports menu then click in the "Import" tab

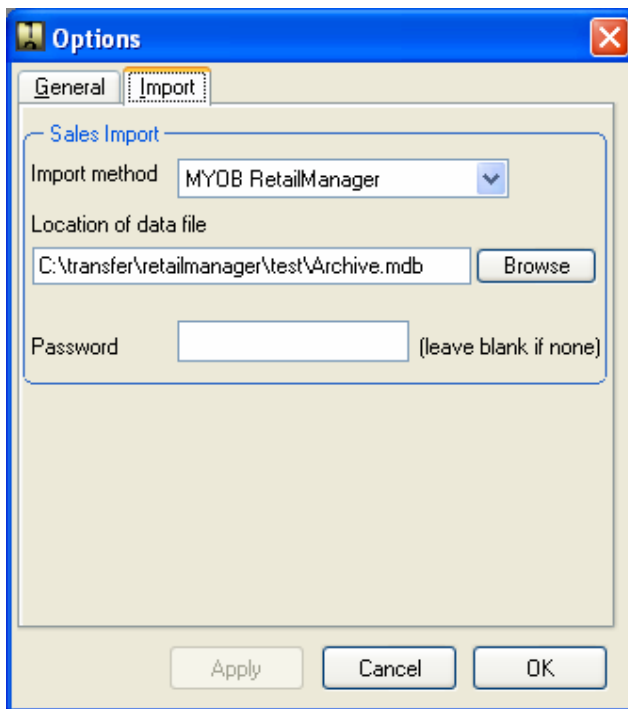
Select "MYOBRetailManager" for the import method and then enter the location of your Retail manager data file. The data file is generally stored in a folder named the same as your company under the Retail Manager folder. If you want to generate reports on your recent data choose the file recent.mdb.

Note:

You can also use the file mirror.mdb to include older archived data in your reports, but you can only use this file if you are running WinCounter reports on the same local drive as the mirror.mdb file.

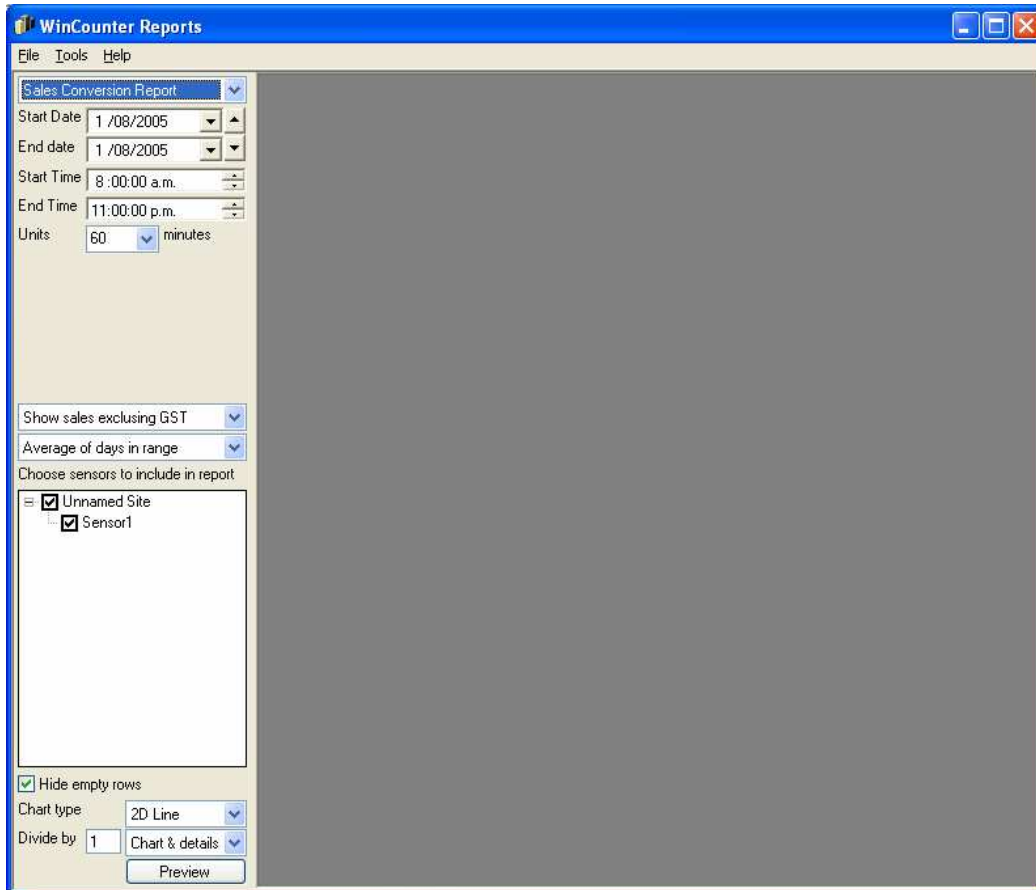
If your data file uses a password, enter it in the password box.

Click OK.



Running the Sales Conversion Report

Once you have activated the sales import you should see a report called "Sales Conversions Report" in the list. Run this report as you would any other WinCounter report.



To report on a single day set the Start Date and End Date to the same day. If you choose a date range that covers more than one day you will need to choose the average or the total of figures for the selected range of days.

You can choose to show sales including or excluding GST.

If you choose to show a chart on the report it compares traffic with sales transactions. It does not show sales figures.